

# Hoover Trail

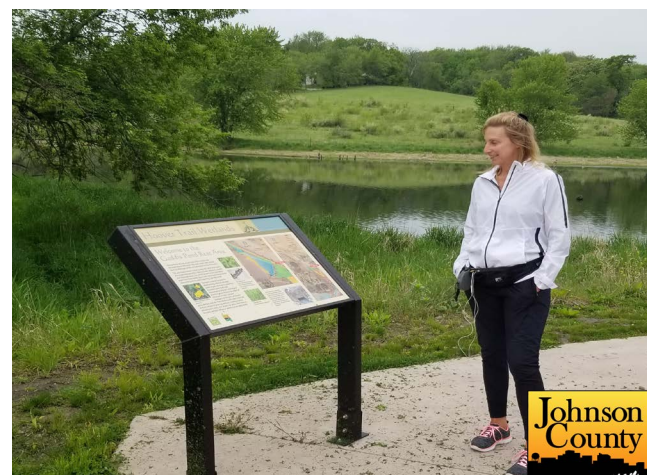
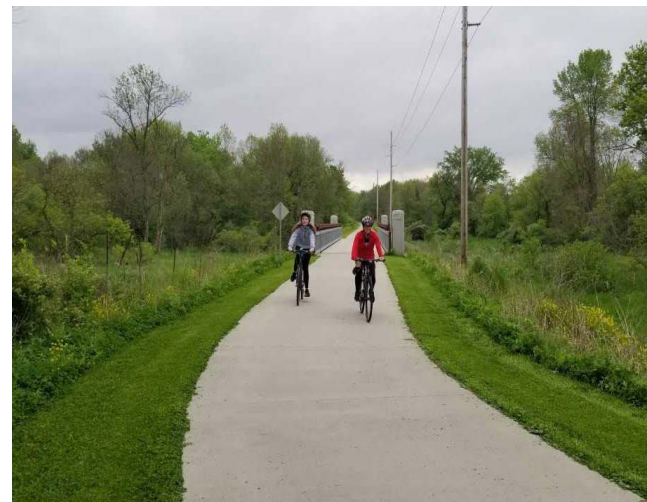
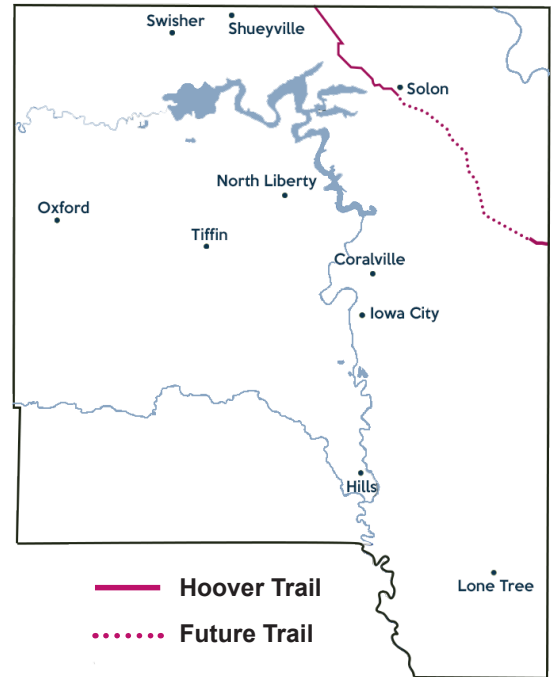
**Overview:** The Hoover Trail is a 5.8-mile length segment between the communities of Ely and Solon and a 3.7-mile segment between the communities of Oasis and West Branch. Much of the trail corridor is built along the old Chicago, Rock Island, and Pacific Railroad right-of-way. The trail segment from Solon to Ely connects to Cedar Rapids and Cedar Falls through a 70 mile length, trail network. The Hoover Trail is also a part of both the Great American Rail-Trail and The American Discovery Trail, coast-to-coast trail networks that link non-motorized trails across the country.

## Johnson County Trail Segments:

**Linn County to Solon:** The paved northernmost segment of the trail runs from Seven Sisters Road on the Johnson/Linn County line down to Solon. The trail offers wide open views of farmland and bridges over Lingle Creek and Mill Creek. Near its southern endpoint, it intersects with the North Shore Trail, connecting to Lake Macbride State Park. North of the county line, the trail seamlessly continues as the Cedar Valley Nature Trail to Ely and further to Cedar Rapids and Cedar Falls.

**Oasis to West Branch:** This segment of the trail connects two counties, Johnson and Cedar, and two towns, Oasis and West Branch. Much of the route is tree-canopied so you'll have a pleasant, shady ride on this crushed-stone pathway. On the occasions when you pop out of the trees, you'll see the surrounding agricultural landscape. The Hoover Trail is named after former president and native Iowan, Herbert Hoover. Trail users can visit the Herbert Hoover Presidential Library and Museum in Hoover's hometown of West Branch. This section is maintained by Cedar County Conservation.

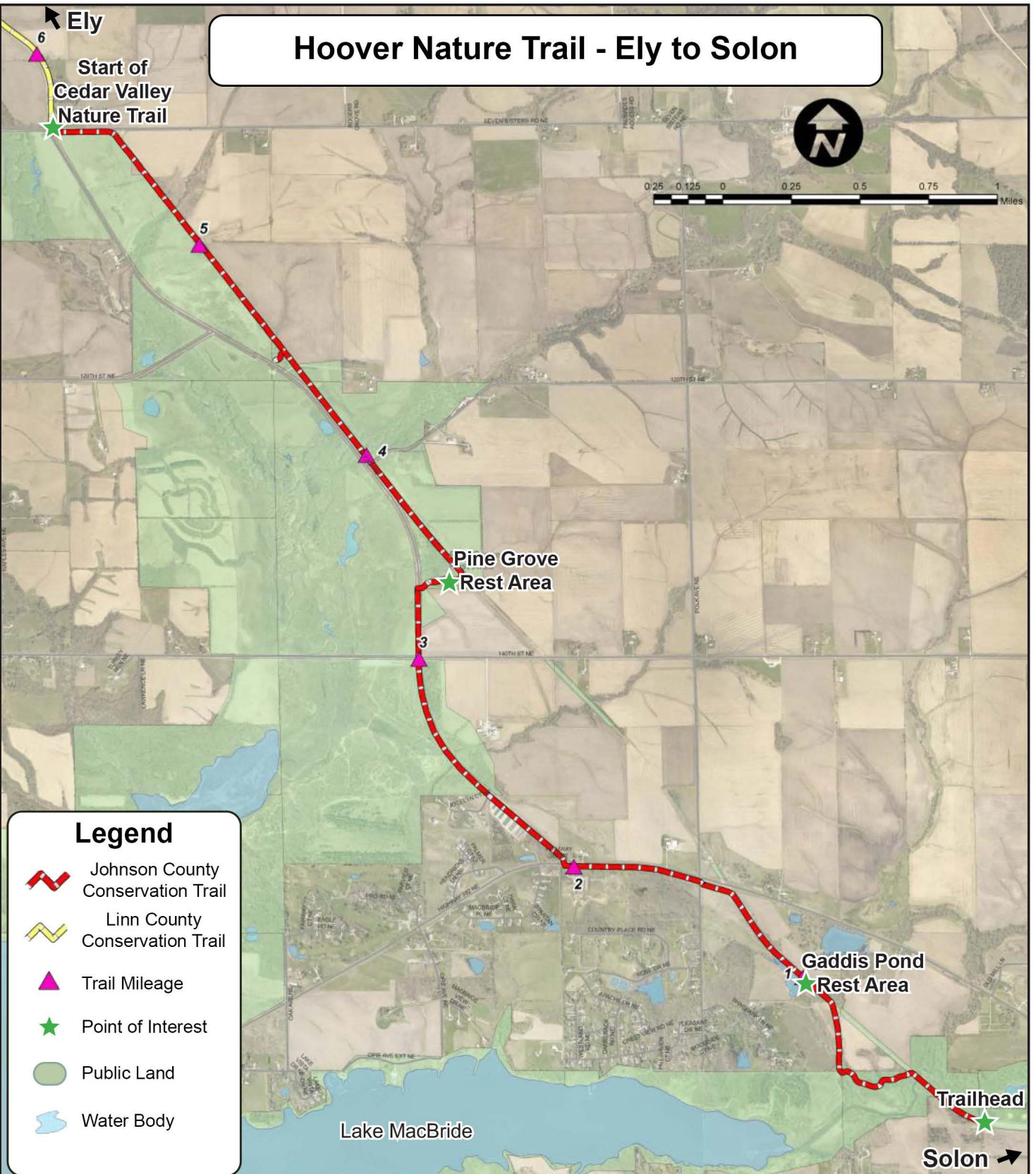
**Trailheads/Parking:** Ely City Park, Solon Recreation and Nature Area, West Branch Dog Park, and Wapsi Creek Park.



# Hoover Nature Trail - Ely to Solon



0.25 0.125 0 0.25 0.5 0.75 1 Miles



## Legend

-  Johnson County Conservation Trail
-  Linn County Conservation Trail
-  Trail Mileage
-  Point of Interest
-  Public Land
-  Water Body